



**YOUR
BIN
YOUR
WAY**

kingwoodbins.ca

KINGWOOD

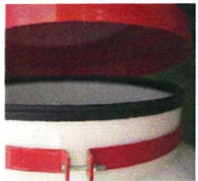
BINS

Manufacturing & Installing
Custom Smoothwall
Hopper Bins

- 3 - 45 Tonne Bins
- Constructed from 12G Steel
- 1 Interior Powdercoat Finish
- 2 Exterior Powdercoat Finish



Standard Bin Features



Spring Bin Lid



Pull Rope



4" Fill Pipe



6" PVC Vent Pipe



Sight Glass Level Indicator



16" Ladder



Drip Ring

Bin Options



8x8 Poke Hole



Safety Ladder



Cone Manway

Model #	Tonne	Cubic Ft.	Diameter	Total Height	Bin Weight
3T65	3	175	6'	13'	1100 lbs
5T760	5.5	300	6'	18'	1860 lbs
8T710	8	450	7'	19'	2300 lbs
11T810	11	610	8'	20'	2650 lbs
12T812	12.5	700	8'	22'	3000 lbs
15T815	15	865	8'	24'	3300 lbs
18T9512	18	1030	9.5'	24'	3750 lbs
22T9515	22	1250	9.5'	27'	4100 lbs
26T9518	26	1465	9.5'	30'	4400 lbs
30T9520	30	1650	9.5'	32'	4800 lbs
36T1118	36	1930	11'	30'	5500 lbs
38T1120	38	2100	11'	32'	5900 lbs
45T1124	45	2500	11'	36'	6500 lbs

We manufacture and install smoothwall hopper bins from 3 to 45 tonne in size. Constructed from 12G steel (except for bins under 5 tonne), our bins are powder-paint finished with 1 interior and 2 exterior coats. Standard bin body colour is white, but can be customized to any powdercoat colour available. Get in touch with your local dealer to get a quote. Your bin, your way!